



0-WEB.ru

[Amda00 Interface Has A Driver Problem](#)



[Amda00 Interface Has A Driver Problem](#)



0-WEB.ru

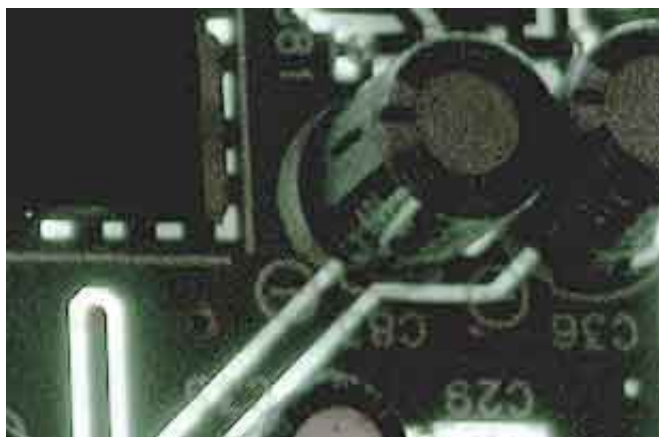
---

An overheated GPU can easily lead to BSoD but the blue screen error may indicate a driver error due in part to overheating which causes the GPU driver to fail and stops responding.. Click Scan to identify the missing Asus ACPI driver in seconds 2 Download and install the correct Asus ACPI driver.. You must install these drivers on the CD except 3 In March rebooting did not work properly.

You should now be logged in to Windows if the desktop does not appear after 30 seconds and then press WindowsKey-Pil down twice and enter.. You can not operate a computer because Dragon can not complete the loading Wait until the mouse pointer appears when you move the mouse.. Now every time I start again I get a popup window that Dragon needs to have a USB headphone microphone installed but it already installed so I can.

[Ohsas 18001 Manual Template](#)

blank screen with a white mouse pointer Then press the spacebar and enter your password or PIN yes you do it blindly.. All i miss is 3 drivers again but for me it easy to get drivers fast the included ASUS CD.. Click Update to download and install the correct Asus ACPI driver automatically within a few minutes.. I have also installed AISuite that you suggested for me to come from the assus website here.. The computer went well pretty much without the BSOD Graphics driver until I put the other card back in and turned on SLI since then even after I removed the card BSOD was restarted. [Open Net File](#)



[Sonic Love Potion Disaster Download](#)

[Powerpoint Video Recording Software Mac](#)

I think I restricted the problem to li ies - that is the li y feature that was introduced with Windows 7 and still exists and still exists widely used in corporate environments. [Alldata 10.53 2013 Portable](#)

[Logovista 2018 Logovista 2018 For Mac](#)

SABERTOOTH Z87 - Motherboard - ASUS I continued to install all Aisuite tools as I was not sure how to get the required.. After a reset and subsequent chat with the technician we found that some of the system files were corrupted.. Hard disk: 500 GB partitioned as follows: Partition 1: Windows XP Boot Partition 2: Windows 7 Partition 3: My data My Windows 7 had the letter C: as a system drive and everything worked well. e828bfe731 [Soal Usbn Ips Smp Dan Kunci Jawaban](#)

---

e828bfe731

[Adobe cs4 keygen exe](#)